

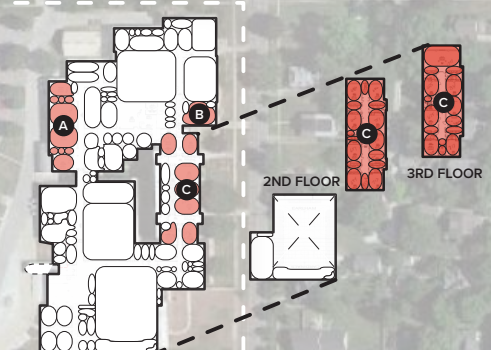
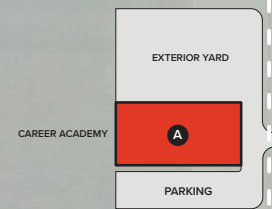
## EARLHAM COMMUNITY SCHOOL DISTRICT FACILITIES VISION - CAMPUS PLAN

### MEET CURRENT AND SHORT-TERM NEEDS

- A CAREER ACADEMY BUILDING | SUPPORT SERVICES**
  - BUILD NEW ACADEMY BUILDING ON DISTRICT OWNED-PROPERTY TO THE NORTH (+/-20,000 sf)
  - RENOVATE VACATED LABS AND CLASSROOMS IN SCHOOL (+/-5,600 sf)
  - RELOCATED ART ROOM TO BE INCLUDED IN RENOVATION
- B CAFETERIA EXPANSION**
  - EXPAND CAFETERIA SEATING INTO EXISTING ART ROOM (2,000 sf)
  - EXPANDED SEATING WILL REDUCE OVERCROWDING AND SCHEDULING ISSUES WITH EXISTING CAFETERIA
  - PROJECT A OR F MUST BE COMPLETED FIRST AND PROVIDE NEW OR RELOCATED ART ROOM
- C REIMAGINE + REFRESH THREE-STORY**
  - RENOVATION OF EXISTING THREE-STORY BUILDING TO PROVIDE MODERN LEARNING ENVIRONMENTS WHILE RETAINING AN IMPORTANT COMMUNITY ASSET
  - RENOVATION SHOULD FOCUS ON PROVIDING GENERAL LEARNING ENVIRONMENTS THAT CAN SUPPORT ELEMENTARY AND MIDDLE SCHOOL PROGRAMMING. IMMEDIATELY SPACES MAY BE USED BY GRADES 1-5 BUT LONG-TERM SHOULD SUPPORT GRADES 6-8
  - SPACE SHOULD BE A MIX OF CLASSROOMS, COLLABORATION SPACE, AND SUPPORT CLASSROOMS
- D ATHLETICS EXPANSION**
  - DEVELOP A NEW MULTI-PURPOSE ATHLETICS BUILDING ADJACENT TO THE STADIUM

### WHILE SUPPORTING LONG-TERM NEEDS

- E NEW ELEMENTARY SCHOOL**
  - WHEN ENROLLMENT SIGNIFICANTLY INCREASES, LOOK TO DEVELOP A NEW PK-5 ELEMENTARY SCHOOL ON A DIFFERENT SITE
  - RETAIN OR ACQUIRE A SITE OF APPROXIMATELY 14-16 ACRES TO ALLOW FOR CONSTRUCTION OF FUTURE ELEMENTARY SCHOOL
  - AS SPACES ARE RENOVATED WITHIN THE EXISTING PK-12 FACILITY, FOCUS SHOULD BE ON GENERAL SPACES THAT SUPPORT EDUCATION OR CAN BE EASILY ADAPTABLE FOR SECOND EDUCATION IN THE FUTURE, NOT CONSTRUCTED TO SPECIFICALLY MEET THE NEEDS OF PK-5
  - PROJECT MAY BE CONSTRUCTED IN PHASES (EX. PK-2 PHASE 1, 3-5 PHASE 2), HOWEVER THIS WILL CREATE OPERATIONAL CHALLENGES AND INEFFICIENCIES IN THE INTERIM



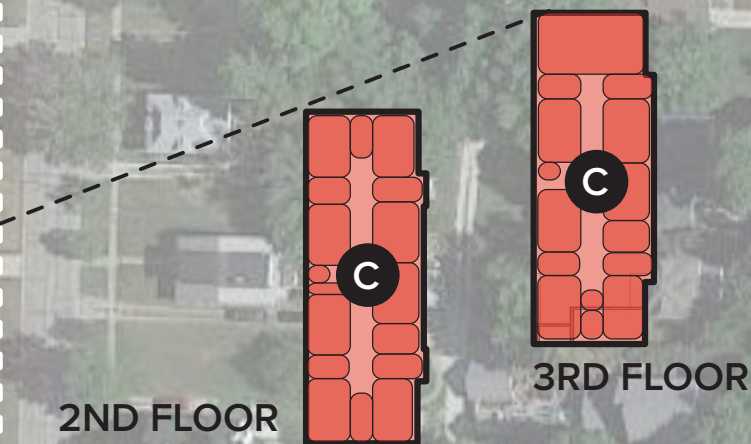
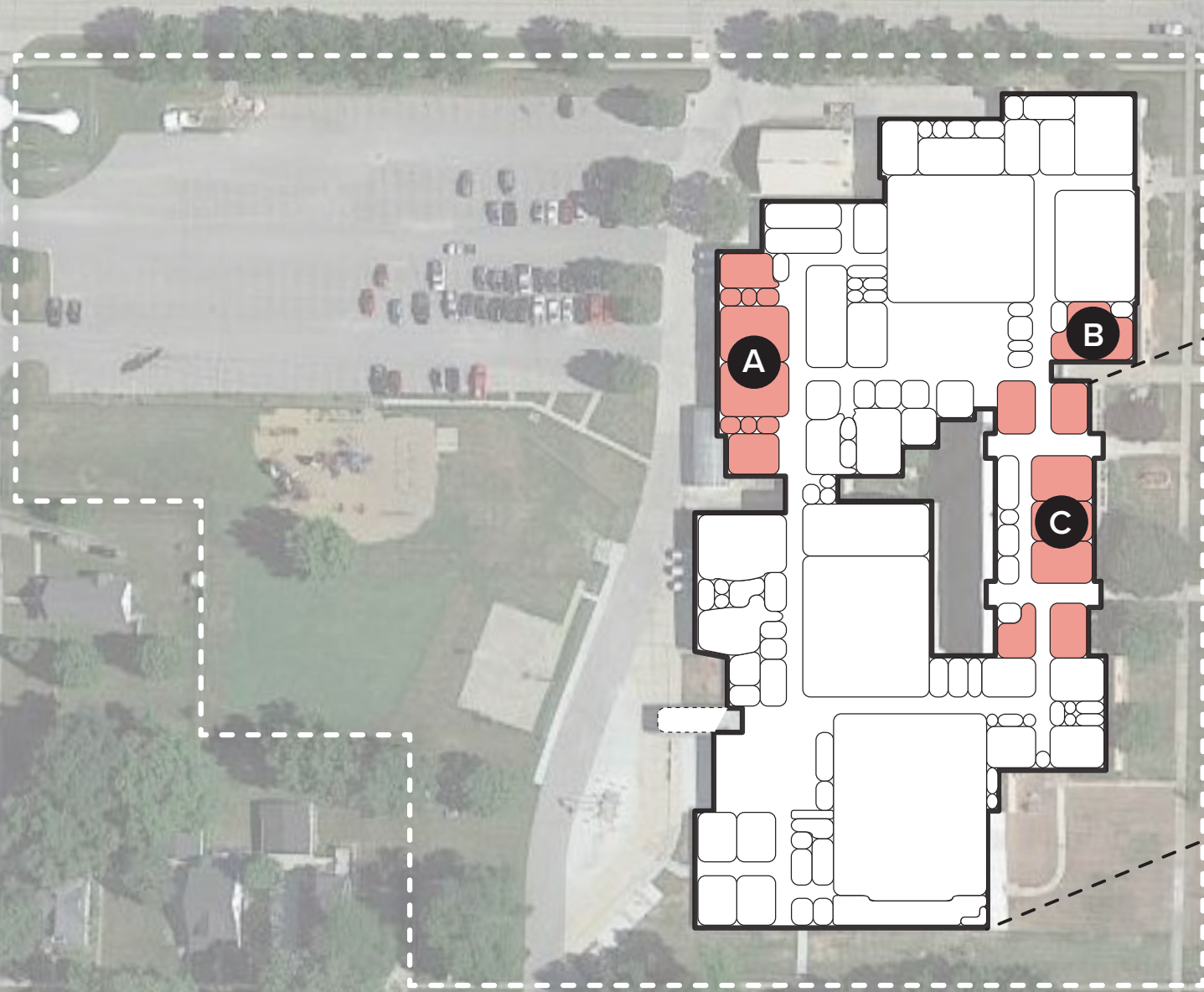
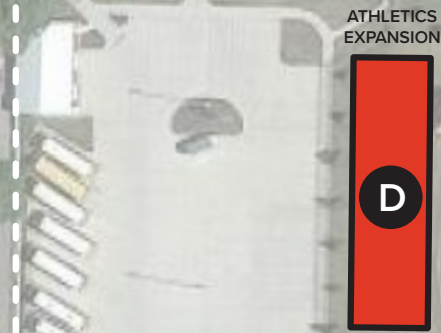
## EARLHAM COMMUNITY SCHOOL DISTRICT FACILITIES VISION - BUILDING PLAN

### MEET CURRENT AND SHORT-TERM NEEDS

- A** **CAREER ACADEMY BUILDING | SUPPORT SERVICES**
  - BUILD NEW ACADEMY BUILDING ON DISTRICT OWNED PROPERTY TO THE NORTH (+/-20,000 sf)
  - RENOVATE VACATED LABS AND CLASSROOMS IN SCHOOL (+/-5,600 sf)
  - RELOCATED ART ROOM TO BE INCLUDED IN RENOVATION
- B** **CAFETERIA EXPANSION**
  - EXPAND CAFETERIA SEATING INTO EXISTING ART ROOM (2,000 sf)
  - EXPANDED SEATING WILL REDUCE OVERCROWDING AND SCHEDULING ISSUES WITH EXISTING CAFETERIA
  - PROJECT A OR F MUST BE COMPLETED FIRST AND PROVIDE NEW OR RELOCATED ART ROOM
- C** **REIMAGINE + REFRESH THREE-STORY**
  - RENOVATION OF EXISTING THREE-STORY BUILDING TO PROVIDE MODERN LEARNING ENVIRONMENTS WHILE RETAINING AN IMPORTANT COMMUNITY ASSET
  - RENOVATION SHOULD FOCUS ON PROVIDING GENERAL LEARNING ENVIRONMENTS THAT CAN SUPPORT ELEMENTARY AND MIDDLE SCHOOL PROGRAMMING. IMMEDIATELY SPACES MAY BE USED BY GRADES 1-5 BUT LONG-TERM SHOULD SUPPORT GRADES 6-8
  - SPACE SHOULD BE A MIX OF CLASSROOMS, COLLABORATION SPACE, AND SUPPORT CLASSROOMS
- D** **ATHLETICS EXPANSION**
  - DEVELOP A NEW MULTI-PURPOSE ATHLETICS BUILDING ADJACENT TO THE STADIUM

### WHILE SUPPORTING LONG-TERM NEEDS

- E** **NEW ELEMENTARY SCHOOL**
  - WHEN ENROLLMENT SIGNIFICANTLY INCREASES, LOOK TO DEVELOP A NEW PK-5 ELEMENTARY SCHOOL ON A DIFFERENT SITE
  - RETAIN OR ACQUIRE A SITE OF APPROXIMATELY 14-16 ACRES TO ALLOW FOR CONSTRUCTION OF FUTURE ELEMENTARY SCHOOL
  - AS SPACES ARE RENOVATED WITHIN THE EXISTING PK-12 FACILITY, FOCUS SHOULD BE ON GENERAL SPACES THAT SUPPORT EDUCATION OR CAN BE EASILY ADAPTABLE FOR SECOND EDUCATION IN THE FUTURE, NOT CONSTRUCTED TO SPECIFICALLY MEET THE NEEDS OF PK-5
  - PROJECT MAY BE CONSTRUCTED IN PHASES (EX. PK-2 PHASE 1, 3-5 PHASE 2), HOWEVER THIS WILL CREATE OPERATIONAL CHALLENGES AND INEFFICIENCIES IN THE INTERIM



1ST FLOOR

2ND FLOOR

3RD FLOOR